

EPIC STRIDES DECEMBER NEWSLETTER

www.epicstrides.net

HAPPY
holidays

EPIC NEWS

Important Dates

Mark Your Calendars!
December Closings

WINTER CLOSING

We will be closed
December 25th-27th
and January 1st-2nd.

REMINDER

Parents: Please submit
your new insurance
cards for 2018 if your
policy changed.

Happy Holidays!

It's the most wonderful time of the year! May your days be merry and bright as you enjoy this holiday season with those close to you. 2018 is near, so have a Happy New Year!

Parent Resources

AUsome Moms

*AUsomemoms.org

TACA

*www.tacanow.org

/local-chapters/

midwest/texas/

National Autism
Association

*naa-nt.org

Follow Us



@epicstridesaba



@epicstrides

DID YOU KNOW?

*Reindeer can weigh anywhere between 240-700 pounds.

*Reindeer shed their antlers in the winter.

*A male reindeer is called a bull

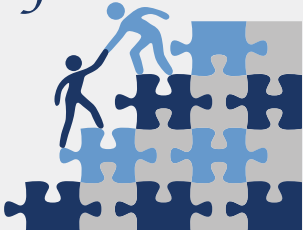
*A female reindeer is called a cow.

*Reindeer antlers are rubbery, living masses of blood and marrow and grow until August when they begin to harden.



#HOLIDAYS

Epic Strides



EPIC UPCOMING EVENTS

12/2 - Sensory-Friendly Winter Holiday Performance at 1:30pm and only \$5 per person at the Dallas Childrens Theater. Visit www.dct.org to get your tickets today and enjoy the Magic of Live Theater!



FUN-FILLED ACTIVITIES

- 12/3 - Sensory-Friendly Chuck E Cheese visits on the 1st Sunday of the Month: 9am-11am
- 12/3 - Sensory-Friendly Urban Air Jump on the 1st Sunday of the Month: 10am-12pm for \$12/kid
- 12/3 - Jingle Jamboree at ASI Gymnastics in Allen at 6pm. RSVP Required due to limited space.

PARENT CONNECTIONS

A time to connect with like-minded parents in areas around the metroplex.

- 12/5 - TACA Taco Tuesday at Esparanza's in Grapevine beginning at 7pm.
- 12/14 - Hope for the Holidays: Coffee Talk, come share the hope in our Autistic journeys at 7pm La Madeleine, 8008 TX-121, Frisco, TX 75034
- 12/15 - Mom's Morning out at 10am La Madeleine, 987 I-30 Frontage Rd., Rockwall, TX 75087



MOVIE CENTRAL

- 12/9 - Sensory-Friendly Movies: The movie Coco is playing
- 12/12 - Sensory-Friendly Movies: The movie Wonder is playing
- 12/23 - Sensory-Friendly Movies: The movie Star Wars - The Last Jedi is playing
- 12/26 - Sensory-Friendly Movies: The movie Star Wars - The Last Jedi is playing

